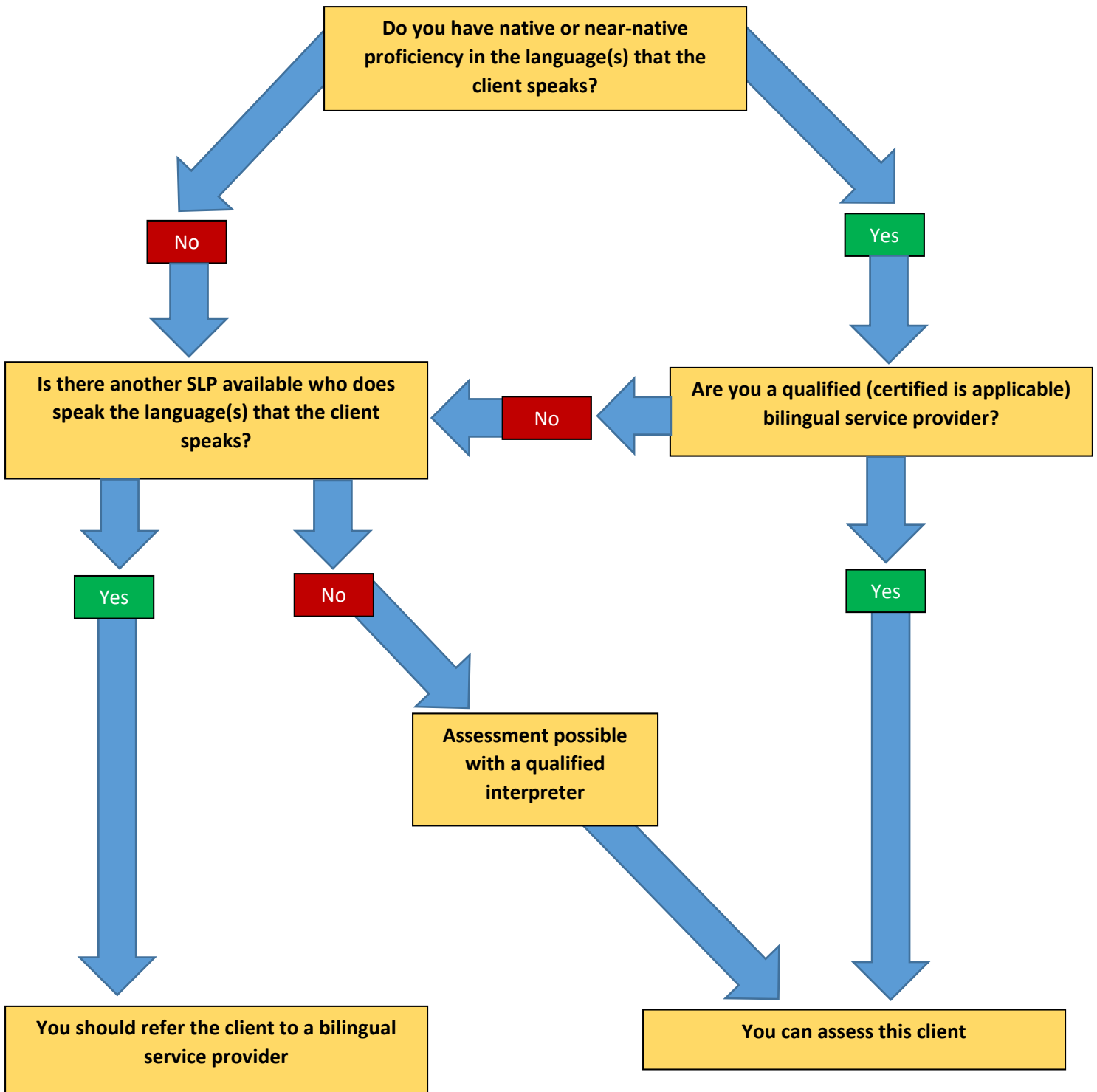


Bilingual SLP Clinical Decision Making

What do you need to know before conducting an assessment with a bilingual client?



What defines a **“qualified bilingual service provider”**? Speaking a language in itself does not equate with being a qualified bilingual service provider. In addition to possessing native or near-native proficiency in the language that the client speaks, a bilingual SLP must demonstrate requisite knowledge and skills as outlined by ASHA. This includes things such as knowledge of bilingual language acquisition, language transfer, appropriate assessment techniques, appropriate use of standardized tests, bilingual education, simultaneous/sequential bilingualism, and identification of a difference vs disorder.